

**SUSTAINABLE**  
**THEN. NOW. FOREVER.**



SPECIAL PROMOTIONAL SECTION

Photo by George Rose

## **Sonoma County Winegrowers' 5th Annual Sustainability Report**

January 2019

A comprehensive report on Sonoma County Winegrowers' commitment to making Sonoma County a 100% Sustainable winegrowing region.





# Stewardship. Integrity. Collaboration.

## Table of Contents

A Letter from the Chairman.....	3
A Letter from the President .....	4
Sustainability Report Card.....	6
Environmental Stewardship, Social Responsibility, Economic Viability .....	7
Growers' Contributions to the Community.....	8
Grape Growers Foundation.....	9
2018: A Year in Review .....	10
The Sustainability Movement .....	12
Sustainable Winegrowing Label.....	13
2018 Sustainability Awards.....	14
Sonoma County Center for Ag Sustainability.....	15
Sponsors.....	16
Sustainability Roll Call.....	17

### Production

North Bay Business Journal  
Sonoma County Winegrowers Staff

### Writing

Sonoma County Winegrowers Staff

### Stay Connected

Keep informed of the latest news,  
information and updates on our  
sustainability initiative.

[www.sonomawinegrape.org](http://www.sonomawinegrape.org)

[Facebook.com/sonomagrapes](https://www.facebook.com/sonomagrapes)

[Twitter.com/sonomagrapes](https://twitter.com/sonomagrapes)

[Instagram.com/  
sonomacountywinegrowers](https://www.instagram.com/sonomacountywinegrowers)



### About Us

The Sonoma County Winegrape Commission, also known as the Sonoma County Winegrowers (SCW), was established in 2006 as a marketing and educational organization dedicated to the promotion and preservation of Sonoma County as one of the world's premier grape growing regions. SCW has oversight by the California Department of Food and Agriculture, which supports producer regions. With more than 1,800 growers, SCW's goal is to increase awareness and recognition of the quality and diversity of Sonoma County's grapes and wines, through dynamic marketing and educational programs targeted to wine consumers and wine influencers around the world.

### Mission

The mission of Sonoma County Winegrowers is to increase the value of Sonoma County winegrapes while nurturing and protecting sustainable agriculture for future generations.

### Values

**Family Farming:** Sustaining a farm or a family requires love, commitment and hard work.

**High Quality:** We are blessed with a diversity of climate, soil and setting. We bring forth the world's finest abundance of winegrape varieties.

**Stewardship:** This is the land where we love, live and work. We are committed to sustaining, preserving and protecting it for future generations.

**Community:** Sustainable agriculture depends on vibrant and healthy people. We treat our neighbors, workforce and our community as an extension of our family.

### Board of Commissioners

Joe Dutton (Chairman)  
Glenn Proctor (Vice Chairman)  
Mark Sanchietti (Treasurer)  
Marissa Ledbetter  
Doug McIlroy  
George Martinelli  
Vickie Mulas  
Bret Munselle  
Brad Petersen  
Steve Sangiacomo  
Ray Johnson (Public Member at Large)

### Board of Commissioner Alternates

Kevin Barr  
Tony Bugica  
Domenic Carinalli  
Anna Darden  
Kris Hicks  
Mark Pasternak  
Rich Schaefer  
Taylor Serres  
Carolyn Wasem  
Robert Weinstock  
Rhonda Smith (Public Member at Large)

### Sonoma County Winegrowers Staff

#### Karissa Kruse

President

#### Kate Piontek

Vice President of Operations

#### Amy Landolt

Director of Marketing & Public Relations

#### Dana Cappelloni

Director of Sustainability & Grower Education

#### Alisha Basich

Business Development Manager

#### Valerie Pearce

Business Manager

#### Kaitlyn Silva

Marketing Coordinator

#### Rachel Thralls

Wine Education Consultant

#### Sheila Quince

Event Consultant

#### Joe Browde

Sustainability Consultant

# A Letter from the Chairman

As we start a new year of farming, I would like to start by giving my sincere thanks to our local community of winegrowers and farmers. I am proud and humbled by the passion and progress this group has shown in uniting as global leaders in sustainability. 2019 marks the final push toward our commitment to include 100% of Sonoma County vineyards in a sustainable winegrowing certification program. I believe wholeheartedly that this leadership will be key in securing the growth and value of Sonoma County winegrapes for generations to come, and I am proud to serve as Chairman of Sonoma County Winegrowers at this exciting time.

Along with the release of our 5th Annual Sustainability Report, January brings our annual meeting, Dollars & Sense. This 28-year tradition sets the tone for the year ahead. In 2019, we are focusing on our sustainability goals and working to find new, innovative ways to bring education about agriculture, sustainability and Sonoma County to consumers. To ensure that each glass of Sonoma County wine is synonymous with more than just great quality. In these pages, you'll read about the ways Sonoma County Winegrowers are bringing the story of multi-generational families and their commitment to their farms, employees and sustainable businesses to restaurant tables and supermarket shelves nationwide. You'll also read about the ways we believe Sonoma County is an unparalleled place to grow, farm and thrive. An agricultural haven truly worth preserving for future generations.

Of course, as with any lofty goal, continued progress has not been without its bumps and roadblocks. 2018 brought new challenges, as we worked hard to recover after the wildfires. In addition to the scars on the landscape and community, we struggled to assure would-be tourists, media and wine lovers that the Sonoma



County wine industry has not been destroyed in the flames of the wildfires they have watched blazing across their television screens. I am proud of the work President, Karissa Kruse and the team at Sonoma County Winegrowers has done over the last 15 months. In addition to hundreds of interviews, SCW Management has traveled to major U.S. wine markets and hosted dozens of sommeliers, writers and consumers to help tell our story and promote Sonoma County wine and agriculture.

On a personal note, I was proud to see the staff and operations of Sonoma County Winegrowers find a new home this year at Sunnyview Vineyard. This transition gives the organization the benefit of hosting grower education events, board and committee meetings and all additional operations on-site. The mission of the organization has always been squarely fixed on promoting agriculture and grower education. I am happy to see the team that works so diligently toward that goal spending their working days, as we do, on a vineyard.

Sincerely,  
Joe Dutton

## Sonoma County Winegrowers Recognized By Governor Brown with California's Highest Environmental Honor



On January 19th, 2016, California Governor Jerry Brown recognized the Sonoma County Winegrowers sustainability commitment and progress with the State's highest environmental honor, the Governors Environmental and Economic Leadership Award (GEELA).

The GEELA program recognizes individuals, organizations, and businesses that have demonstrated exceptional leadership and made notable contributions in conserving California's precious resources, protecting and enhancing our environment and building public-private partnerships. The annual award is administered by the California Environmental Protection Agency, in partnership with the Natural Resources Agency, the Department of Food and Agriculture, the State Transportation Agency, the Business, Consumer Services, and Housing Agency, the Labor and Workforce Development Agency and the Health and Human Services Agency.

For the Sonoma County Winegrowers, it is an incredible honor to be recognized for environmental leadership and the award validates the depth of the region's sustainability program – which focuses on being socially responsible, environmentally conscientious and economically viable. This recognition is also a testament to the dedication and leadership of Sonoma County's 1,800 grape growers who have worked tirelessly to ensure they positively impact the local community and preserve agriculture here in Sonoma County.

At the time of receiving the award, Secretary of the California Department of Food & Agriculture Karen Ross commended Sonoma County grape growers, saying, "I congratulate Sonoma County Winegrowers on this recognition of their remarkable commitment to the Sustainable Winegrowing Program. It is a fitting tribute to the dedicated and collaborative efforts of grape growers throughout the county."

## Sonoma County By the Numbers

Half of Sonoma County's land is still in a natural state of forests and woodlands.

- **1,050,000** The size (acres) of Sonoma County
- **Only 6%** of Sonoma County's 1 million acres are planted to grapes (Urban 9%, Pastures 36%, Forests 49%)
- **1 to 2** For every 1 acre of vineyards, our growers farm an additional 2 acres of diversified agriculture, including pasture land, dairy, poultry, figs, hay, lavender, limes, pears, apples, etc.
- **More than 1,800** grape growers in Sonoma County
- **85%** of Sonoma County vineyards are family-owned and operated
- **80%** Sonoma County vineyards that are 100 acres or less
- **40%** Sonoma County vineyards that are 20 acres or less





# A Letter from the President

## **Sustaining Agriculture in a Year of Recovery**

Recovery – defined as a “return to a normal state.”

2018 was a year of recovery in Sonoma County. However, I am not sure it was a return to a normal state; perhaps a search for a new normal? As I reflected on the past 12 months, I thought a lot about what it means to be a farmer today. Our local farmers wear so many hats: land stewardship; purchasing; maintaining equipment, buildings, structures and fences; caring for animals; taking orders from mother nature; human resources and people

management; pest identification and management; conservation; water management and habitat preservation; partnership development; grower relations; crop decisions and planting decisions; transportation; logistics and operations; community engagement; neighbor communication; strategic planning; financial management, succession planning; family business dynamics; economic pressure and trade considerations; branding and marketing; and the list goes on.

In Sonoma County, agriculture is the backbone of our economy. Our farmers represent our local values and protect our region’s rural character. That is why our grape growers’ commitment to sustainable farming is so critical. It is about preserving our local ag lands, improving year after year, collaborating and having the resources available not only to survive, but support farming and our broader community in thriving.

Over the past five years Sonoma County grape growers have embraced and led wine regions around the world in their commitment to sustainability. It is the right thing for our farming families, following sustainable practices leads to better quality grapes, and it keeps our local land in agriculture.

With farming becoming more complicated year after year and Sonoma County’s efforts to establish a new “state of normal” post the October 2017 fires, 2018 brought an increased importance for the Sonoma County Winegrowers (SCW) to share the stories of our grape growing families and our unique winegrowing region across the world.

With this in mind, SCW maintained focus on four key priorities in 2018: sustainability leadership; investing for the long-term and thought leadership; increasing the value of the Sonoma County brand; and reaching key influencers around the world. In the following pages of this report, you’ll read how we strategically planned and executed

grower and marketing programs to ensure these priorities were served.

## **Sustainability Leadership**

When SCW announced, on behalf of the grape growing community, in 2014 that the region had set a goal to be 100% certified sustainable in our grape growing practices, the announcement literally made global news for its bold commitment. For the last few years, wine influencers and media asked if such a wide-reaching initiative could be accomplished; so it was refreshing that during my last media interview of 2018, the writer actually asked me what took us so long to make this kind of commitment! I applaud that question as sustainable farming has long been at the heart of our Sonoma County grape growing community. Our roots are in family farming and a 200+ year history of winegrowing in the region, but it was the commitment to work together towards certification that was newsworthy. It is that bond that makes Sonoma County such a special place to live and farm; our growers across the region are more like family than competitors and they share best practices so that the grapes collectively farmed in Sonoma County are the best quality in the world.

## **Sonoma County Sustainability Wine Label**

In 2018, SCW launched our “Sustainably Farmed Grapes” logo for wineries to use on their wines starting with the 2017 vintage. Wines that are using at least 85% certified sustainable winegrapes can use the label after an audit from SCW. This exciting opportunity to directly communicate the sustainability commitment to wine consumers through the wine label continues to position Sonoma County as leaders in sustainability in the marketplace. You can read more about this exciting initiative on page 13 of this report.

Sustainability continues to be the DNA of Sonoma County grape growers and the important message that we share to communities, wine influencers, media and wine lovers around the region, nation and world. I am so proud that as 2018 came to a close, 97% of our grape growers were part of our sustainability program and 89% had become certified, helping us close in on our goal to reach 100% during the next year.

## **Investing for the Long-Term**

### **Sonoma County Center for Ag Sustainability**

Although the day-to-day focus of SCW is to promote the Sonoma County wine region, the more critical thought leadership is around the long-term preservation of agriculture. There are two major initiatives that support this work – the Sonoma County Center for Ag Sustainability and the Sonoma County Grape Growers Foundation.

In 2017 to support on-going thought leadership, SCW launched the Sonoma County Center for Ag Sustainability (SCCAS). The initiative is essentially an intersection of a think tank and a fellowship. Sonoma County Winegrowers has partnered with a global leader in strategy and facilitation, Professor George Day of the Wharton School of



Business, to facilitate the programs as we look to apply “Silicon Valley thinking and planning” to Sonoma County agriculture and wine.

The end goal is to develop potential solutions and roadmaps, reflecting the outside experience and thinking of our expert members, that will help us continue to protect agriculture in Sonoma County while making sustainable winegrowing a reality. You can learn more about the Ag Center on page 15.

### **Sonoma County Grape Growers Foundation**

Last year was a particularly important year for the work of the Sonoma County Grape Growers Foundation (SCGGF). Since the wildfires in 2017, the SCGGF raised over \$1 million to support Ag employees and their families impacted by the fires and the longer-term recovery through Ag housing efforts. More than 30% of the grape growers in Sonoma County provide workforce housing, making them leaders in employee housing in the North Bay. However, there is still an incredible need for affordable housing across Sonoma County.

2018 also witnessed the launch of the SCGGF Employee Sustainability Recognition Program which honors four vineyard employees each month who are going above and beyond in key areas of leadership. This exciting program celebrates our workforce and will continue in 2019. Read more about these exciting initiatives on page 9, Sonoma County Grape Growers Foundation Year in Review.

### **Congressional Wine Caucus and Agricultural Committee Reception**

Last June, the Sonoma County Winegrowers also hosted our annual reception for the Congressional Wine Caucus and Ag Committee in Washington DC in partnership with Congressman Mike Thompson and Congressman Jared Huffman. With over 25 members of Congress in attendance and many other key staff, this was a great opportunity to educate decision makers on grape growing in Sonoma County and the important role that sustainability can play in being a voluntary, highly-effective path for what is often regulated. Plus, everyone enjoyed the exceptional wines from Sonoma County!

### **Reaching Key influencers and the Sonoma County Brand**

To create more ambassadors for Sonoma County wine, grapes and our sustainability commitment, in 2018, SCW brought Sonoma County on the road with a tour that included outreach to key wine buyers, Sommeliers and media in five U.S. markets – Washington D.C., Austin, Atlanta, Orlando, Chicago and abroad in Mexico City. This work was accomplished through an expanded partnership with the Guild of Somms, an organization with over 12,000 wine influencer and Sommelier members around the world. In each market, the Guild of Somms conducted a three-hour Sonoma County masterclass and the SCW team hosted a media dinner or lunch.

### **Food & Wine Partnership**

We continued our multi-year partnership with Food & Wine Magazine. In addition to advertising, SCW hosted the opening reception at Aspen Food & Wine Classic for 60 Somms personally invited by Ray Isle, Executive Wine Editor for the magazine. We featured vineyard designated sustainably grown wines from around the county and were able to educate these important wine influencers about Sonoma County’s sustainability commitment. At the Aspen Food & Wine festival, SCW in partnership with American Express, also hosted an

[www.sonomawinegrape.org](http://www.sonomawinegrape.org)

exclusive party with Sonoma County wines for Amex cardholders.

### **Sonoma County Harvest Somm Camp**

In October of 2018, SCW also hosted our inaugural Sonoma County Harvest Somm Camp after our first attempt in 2017 ended in our guests being evacuated from the wildfires on the first night. Eleven Somms returned to Sonoma County to enjoy the full experience. This “camp” provides selected Somms an in-depth harvest and wine experience in Sonoma County. Having the same guests back after their quick departure during the fires last year was an emotional and inspiring few days resulting in an even more intimate conversation and appreciation of Sonoma County.

All of these efforts continue to educate those folks who are our front-line ambassadors for Sonoma County wines and the region.

### **2019 and Beyond**

The efforts of the Sonoma County Winegrowers to preserve and promote local agriculture will continue in 2019 and beyond. This coming year, SCW is focused on achieving break-through marketing that will elevate the Sonoma County wine region and our sustainability commitment among wine lovers around the U.S. While current marketing efforts will continue through advertising, in-market media events, education to the wine trade, new promotional videos and traditional advertisements, we are particularly excited about our announcement of a regional “first” - Augmented Reality - focused on sustainability for wineries using the ‘Sustainably Farmed Grapes’ label, which supports the evolution of our sustainability initiative.

Closer to home, SCW will continue our community engagement, grower education and our leadership in employee housing and recognition, ensuring that Sonoma County Agriculture not only survives for another 100 years, but continues to drive the economy through a healthy planet and people!

On a personal note, I was incredibly humbled to have been named the California Association of Winegrape Growers (CAWG) Leader of the Year in 2018. I am sincerely thankful to the CAWG Board of Directors and Sonoma County’s winegrowing community for their continued support. I am in awe of our local grape growers - their hard work, dedication and stewardship and truly believe I have the best job in the world. I hope you’ll all join me in 2019, as we embrace the new normal for Sonoma County.

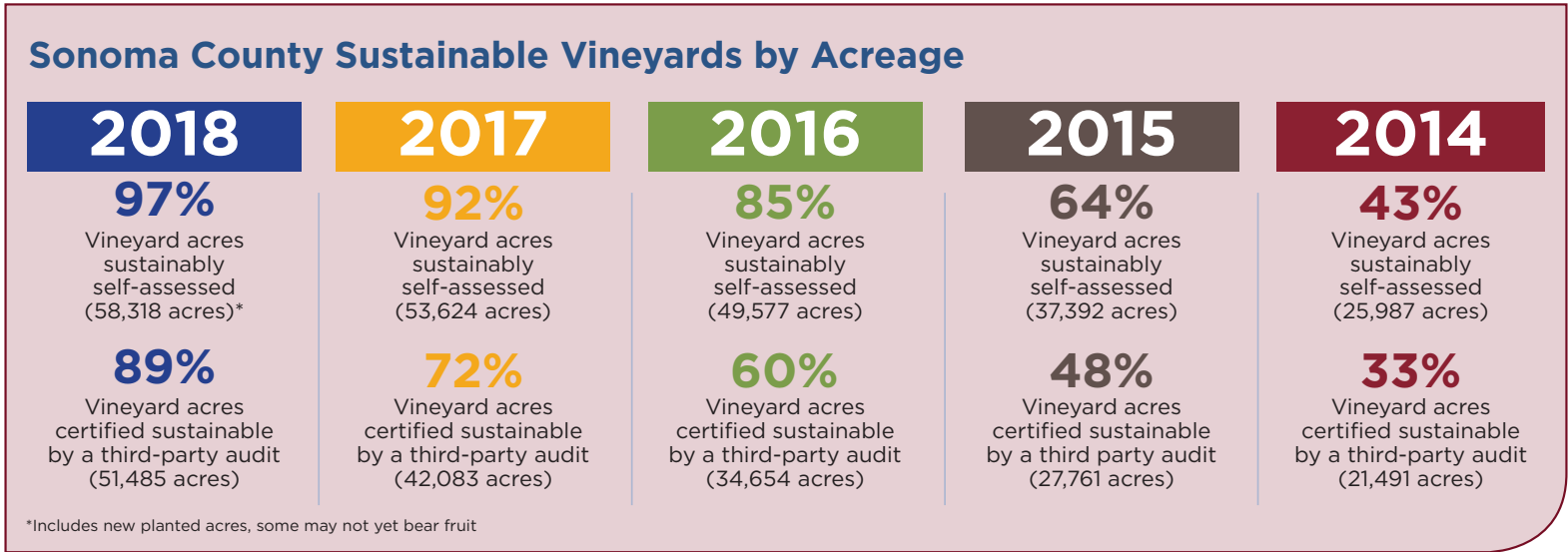
*Karissa Kruse*



*Sonoma County Winegrowers President, Karissa Kruse, is honored at the 2019 California Association of Winegrape Growers (CAWG) Awards after being named Leader of the Year*

# Sonoma County Winegrowers Sustainability Report Card

On January 15, 2014, Sonoma County Winegrowers announced a bold commitment to become a 100% sustainable wine region. Since the last report, Sonoma County’s vineyards have made significant progress towards reaching that goal.



## Sustainability: Defining the Goal

In the ensuing years since making our bold sustainability commitment, Sonoma County Winegrowers has had many challenging, rewarding and surprising experiences related to this pursuit. We expected the goal would be difficult to obtain; it was a big ask for over 1800 winegrowers, and 18 AVAs (American Viticultural Areas) to focus on a common goal – ensuring that the land stays preserved in agriculture, our community of neighbors and employees are treated with respect, and our industry continues to have a positive economic impact on the local community. What we learned though, was that many of

Sonoma County’s multigenerational farmers and winemakers have been practicing sustainable farming and winemaking techniques for decades. Undergoing a self-assessment and eventual sustainability certification proved easier than many thought. Afterall, winegrowers tend to know their land.

We were also (pleasantly) surprised to receive an incredible outpouring of support and attention from our growers, partners, the wine and trade media and from wine regions around the world. This collaborative effort benefits all who grow and thrive here

in Sonoma County and in wine regions world-wide. In that spirit, we promised early on to be fully transparent about our progress.

This comprehensive report shares the stories of our winegrowers’ paths towards sustainability – highlighting their sustainable practices on the environment, local community and people, and the Sonoma County economy.

We are proud of the commitment of our local grape growers and hope you will celebrate their efforts and join us in helping make Sonoma County the best place to live, work and do business.

**Sustainability Programs**

Sonoma County Winegrowers has very strict standards for acceptance into our sustainability program. The programs must incorporate a triple-bottom line approach and include third-party certification. In addition, every vineyard must also create an annual farming plan with a focus on continuous improvement to ensure their sustainable practices continue to evolve and improve each year.

**Sonoma County Sustainability includes four programs.**





# Environmental Stewardship, Social Responsibility, Economic Viability

Sonoma County's winegrowers take a triple-bottom line approach to sustainable practices that measure grape growers' commitment to being socially responsible – in how they work with their employees, neighbors and community – environmentally conscientious with their farming and winery practices, and economically viable as a business. Below, read about three Sonoma County growers who embody each of these sustainability principles.

## Environmental Stewardship: Water Conservation at Merry Edwards Winery

Merry Edwards Winery has long employed deficit irrigation in their 80 acres of Russian River vineyards. This not only helps the vineyards conserve water, but also increases the intense flavors of the wine grapes. Until this year, the winery monitored water stress or “stem water potential” in the vineyards using a pressure chamber. Unfortunately, this technology is limited as it must be measured within an hour of solar noon. In addition, the measurements can be inaccurate on extremely hot or cloudy days. Recently, the vineyard team joined forces with UC Davis and Saturas (Manufacturers of Ag irrigation equipment) to trial mini sensors imbedded in the vine trunk which directly measure vine water stress. These sensors will indicate when to irrigate vines by measuring stem water potential and forwarding information directly to a smart phone app. The sensors are not limited by time of day or the weather. Once out of the R&D stage, these sensors will help vineyard managers be more efficient in irrigation practices, potentially reducing water use and improving fruit quality.



*Saturas sensors measure vine water stress.*

## Social Responsibility: Multi-generational families at Sangiacomo Family Vineyards:

The Sangiacomo family has been farming in Sonoma since 1927 and has long been focused on their relationship with employees, offering medical, dental and 401K benefits to all full-time workers. They also offer training to ensure employees are growing, learning new skills and that they have expertise in the vineyard. This has resulted in unusually long-term retention of employees and even the employment of multiple generations of families.

Rafael Carrillo-Gomez began working for the Sangiacomo Family in 1958, and worked for 53 years before retiring in 2011. His wife, Maria Carrillo-Murillo also worked for the Sangiacomo Family from 1970 to 2011. Today, the couple still resides in a home on the Sangiacomo Family's ranch. Their son, Leovigildo Carrillo began working on the ranch in 1975 and still works there today. The family is committed to sustainability and recognizes that how you treat employees, neighbors, clients and the community is as important as how you treat the land. With this approach, we are confident that the Sangiacomo family will continue farming in Sonoma County for generations to come.



*Rafael Carrillo-Gomez and wife, Maria Carrillo-Murillo with Steve Sangiacomo.*

## Economic Viability: Reducing energy expenses at Alexander Valley Vineyards

In recent years, Alexander Valley Vineyards has focused on continual improvement in sustainable practices. This includes a large initiative to reduce energy usage and the associated expenses. As part of this goal, Alexander Valley Vineyards installed a photovoltaic array (solar array). They also take advantage of their 25,000 square feet of underground caves to naturally control storage temperature and humidity without the need to power a warehouse. The organization has also replaced all fluorescent lighting tubes and bulbs to more energy-efficient LED versions and replaced an aging compressor system for refrigeration with a newer variable speed system that only uses as much power as is being demanded.

The combination of all of these programs has had a significant impact on the cost of energy for Alexander Valley Vineyards. Although the organization is not yet operating on 100% solar power, they were able to reduce their 2018 energy expenses by around 30%, representing an incredible economic and environmental win for the organization, and one that can continue to be realized year over year.



*Some of the solar panels at Alexander Valley Vineyards*

# Winegrape Growers are Actively Engaged in the Community and Give Back Almost \$27 Million Dollars

In 2017, Sonoma County Winegrowers conducted a survey of all grape growers in the county. Survey respondents represented 82% of the county's total acreage. The survey results indicate the incredible investments growers make towards their community and their employees. Thank you, Sonoma County winegrape growers, for your dedication to your community and for making Sonoma County an inspiring and beautiful place to live.



## Key Survey Findings

### Community Support



**\$26.9 million**

is donated annually by winegrape grower families and their businesses to Sonoma County charities.

**93%** of winegrape growers personally donate money to charitable causes.

**74%** of winegrape farming businesses donate money to charitable causes.

**Employment 7,830** people employed by winegrape growers.



Sonoma County vineyard employees earn **\$16.34** per hour

on average, **60%** above California's current minimum wage.

Sonoma County winegrape growers volunteer approximately

**12,830** hours per year.

### Volunteering



Now over **30%** of winegrape growers offer housing to their employees.

### Housing



Winegrape growers provide **1,100+** total bed units for their employees.

### Recycling



**Growers commit to recycling.** In 2018, SCW held 4 recycle events for the grower community. Through these efforts, over 24,000 pounds of plastic have been recycled and kept out of the landfill.



# Sonoma County Grape Growers Foundation

## A Year in Review

We are immensely proud of the work the Sonoma County Grape Growers Foundation (SCGGF) has done over the past year. In 2018, several new programs were developed that deepen the Foundation's impact and demonstrate the organization's commitment and support of Sonoma County agricultural workers and their families.

**Mission:** The mission of the Sonoma County Grape Growers Foundation is for Sonoma County grape growers to be agriculture leaders in social sustainability through partnerships and programs that support the skilled agricultural workforce and their families who sustain farming in Sonoma County.

## Key Accomplishments in 2018

**Affordable Housing:** After the wildfires ravaged Sonoma County in October 2017, SCGGF acted quickly to establish a Wildfire Housing Support Fund, which raised more than \$1 million dollars to support Sonoma County agricultural workers and their families impacted by the fires. During the past year, SCGGF has supported more than 280 agricultural workers and their families by providing new and/or temporary housing, supplementing lost wages, and providing gift cards to purchase new household items, food and supplies and to help pay utilities.

- 280 Agricultural families received support
- 11 families received rent support for up to 2 years
- SCGGF purchased RV Vehicles as temporary housing for 3 ag families
- Gift cards were provided to help offset costs to repurchase household items and supplement wage loss

**Vineyard Employee Recognition Program:** In January of 2018, SCGGF launched a Vineyard Employee Sustainability Recognition Award. This award is presented to vineyard employees who are achieving excellence in the workplace. Four employees are recognized each month for their individual achievement and exceptional performance under that month's theme. The program showcases the various skills and numerous contributions of Sonoma County's vineyard employees. In 2018, 44 employees received the award, prizes consisted of a \$500 Visa Gift Card, and a Sonoma County Sustainable Jacket & Hat. Local advertisements recognizing the winners appeared in both english and spanish. In January of 2019, SCGGF hosted a celebratory luncheon for all recipients of the award and honored one special employee as the 2018 Vineyard Employee of the Year.

**Teacher Externship Program:** In partnership with the Sonoma County Office of Education and the Sonoma County Career Technical Education Foundation, SCGGF piloted a Teacher Externship program. Teachers from two Sonoma County high schools participated in ag education outside the classroom for a week-long deep dive into Sonoma County agriculture. This immersive program focused on the history, value and challenges of ag in Sonoma County. Participating teachers are currently developing an ag-based curriculum for the classroom as a result of this experience.

**Little Library Project:** In collaboration with United Way of Wine Country and the Sonoma County Career Technical Education Foundation, SCGGF funded two Little Free Libraries in Sonoma County. Little Free Libraries provide 24/7 access to books where books are scarce; they are an excellent resource for local families and children. These libraries were placed in targeted agricultural worker family communities to support family literacy and education.



Local advertisements in both English and Spanish publicly thanked recipients of the award.



# 2018: Sonoma County Winegrowers Year in Review

## Highlights from 12 months of Promoting Sonoma County wine and Grape Growing.



### Media Dinners

SCW staff hit the road this year to share our messages on sustainability, wines, and the state of the county after the wildfires. Each city we visited (Austin, Washington D.C., New York, Atlanta, Orlando and Chicago) is known for being a great market for wine lovers. We partnered with the Guild of Sommeliers, who hosted master classes focused on education about Sonoma County for other Sommeliers and wine influencers. In each city, we also hosted a media dinner with local travel, lifestyle, business and food and beverage media.



### Grower Education

Annually, SCW holds three large Grower Education events: Dollars & \$ense, Grower BBQ and Sustainable Winegrowing Field Day. In addition, we co-host a series of integrated pest management meetings and additional grower education sessions.



### Aspen Food & Wine Classic

In June, the team headed to Aspen, Colorado for the annual Aspen Food & Wine Classic. There, we hosted the opening event for top Sommeliers from around the country, giving them an opportunity to taste a diverse mix of the wonderful wines of Sonoma County. SCW also hosted a consumer event for American Express' VIP guests where Sonoma County was the exclusive wine partner poured alongside delicious dishes from well-known chefs.



### New Office at Sunnyview Vineyard

In August, we officially went back to our roots and relocated the offices of Sonoma County Winegrowers to Sunnyview Vineyard on Guerneville Road. This move allows us to host committee and board meetings, grower education events, media and sommeliers right on a working vineyard! In November, we welcomed our growers, sponsors and partners to join us to celebrate the holiday and the end of harvest with a holiday harvest celebration.



### Vin Expo Explorer

In September we hosted three Sonoma County Master courses for a group of 80 global wine buyers who came to Sonoma County as part of the VinExpo Explorer Program. The classes were part of a partnership with Sonoma County Vintners and were held at Sonoma State's new Wine Spectator Learning Center. The classes educated the group on the diversity, sustainability and history of Sonoma County winegrowing.





### **Congressional Wine Caucus**

For the second year, we hosted the Congressional Wine Caucus in Washington, D.C. Several members of local winegrowing families joined us for this bi-partisan event, hosted annually by Congressman Mike Thompson and Congressman Jared Huffman. There, we presented our key messages to Agricultural Legislators, Representatives and staff.



### **Somm Harvest Camp**

In October 2017, our first-ever Somm Harvest Camp began the same night the wildfires began, resulting in the evacuation of 12 wine influencers from around the country. This year, we invited the same group back to experience the best of the Sonoma County wine industry. Over three days, we put them to work picking grapes at Mounts Winery in Dry Creek, challenged them to cook a great meal to pair with local



wines, hosted a seminar at Benovia winery on the differing neighborhoods of the Russian River and introduced them to multiple wine styles, growers and wineries. In the end, the group left as incredible ambassadors of Sonoma County.

### **Wine Riot, Chicago**

In October, we hosted a series of “Crash Courses” on Sonoma County wines and sustainability at Wine Riot, an up-beat wine tasting and educational event focused on the millennial consumer. This event, hosted at Chicago’s Revel Fulton Market aims to demystify wine and make it more approachable for the next generation of wine lovers.



## **Sonoma County: Quick Facts - A Year After the Wildfires**

The past year in Sonoma County has been unlike any other in recent memory. Much has been written about what was lost in October 2017, but an even more important story is the resiliency, spirit, community and beauty that remains.



*Guests gather at Paradise Ridge Winery in September, 2018 to celebrate ahead of Sonoma County Vintner’s annual wine auction.*

Despite the incredible loss of homes in Santa Rosa and the surrounding county, the wine growers and producers of Sonoma County have found many moments over the past year to express gratitude for the minimal impacts to the vineyards and winery buildings. A few facts we are happy (and relieved) to share:

- After observing a full growing season after the fires, the Sonoma County Agricultural Commissioner’s office estimated that less than 500 acres of Sonoma County’s 60,000 acres of vineyards were destroyed or severely damaged last October, representing less than 1% of the county’s total production. Incredibly, vineyards acted as natural firebreaks stopping the spread of fire to structures and landscape that may have otherwise burned.
- Although the fires did take place during the 2017 harvest, more than 90% of Sonoma County winegrapes had been picked by the time the fires started. This was due to an early season heat spike which hastened ripening. Of the remaining 10% of fruit remaining, much was in areas with minimal or no exposure to danger or smoke.
- Paradise Ridge Winery in Santa Rosa was the only Sonoma County winery that lost its tasting room and cellar in the fire. However, the estate vineyards at the property survived and continue to thrive. The original winery location is being rebuilt and will open in 2019.
- We were also humbled and incredibly thankful for the outpouring of donations to the Sonoma County Grape Growers Foundation to support local agricultural employees and their families who were impacted by the wildfires.

While we will never forget the events of October 2017, we are confident that we are moving forward as a more tightly connected and resilient community.

# Ways to Get Involved with the Sonoma County Sustainability Movement

You don't have to be a grape grower to support sustainability in Sonoma County. Below, we outline several ways to support our farmers, their employees and neighbors, and our thriving agricultural community:



## Get to Know Sonoma County Grape Growers & Farmers

- If you live near a vineyard or farm, get to know the owners and growers, and develop a personal relationship with them. Chances are the vineyard or farm is run by a family who, like yourself, cares about the land and wants to be a good neighbor. Of the 1,800 vineyards in Sonoma County, approximately 85% are family owned and operated.
- Every fall, Sonoma County Farm Trails hosts their annual Weekend Along the Farm Trails where local farmers open their gates and barn doors to offer a behind-the-scenes peek at life on the farm. You can also pick up the Sonoma County Farm Trails Map & Guide! Visit [www.farmtrails.org](http://www.farmtrails.org).



## Learn About & Buy Sonoma County Sustainable Wine

- Look for bottles of wine bearing the Sonoma County Sustainability Label. This indicates that the grapes in the bottle are from Sonoma County vineyards which have been certified sustainable!
- Take a Vineyard Adventure walk. There is no better way to learn about sustainable grape growing than to enjoy an educational vineyard walk. The Sonoma County Winegrowers offer free, self-guided Vineyard Adventures at select wineries across the county. Learn about sustainable agriculture and unique sustainable farming practices, as well as the grape growing process. Visit [www.SonomaVineyardAdventures.com](http://www.SonomaVineyardAdventures.com).



## Support Sonoma County Sustainable Agriculture

- In addition to buying wine made from sustainably farmed grapes, you can also purchase sustainably grown produce! Shop at one of two-dozen local farmers markets in Sonoma County to buy fresh, sustainable produce directly from the farmers who grew it. Supporting local farmers and buying their produce enables them to continue the passionate, hard work that they do to sustain agriculture in our county. Visit [www.sonoma-county.org](http://www.sonoma-county.org).
- Sonoma County Farm Bureau is the voice of local agriculture. Help support the long-term preservation of agriculture in Sonoma County and become a Farm Bureau member today!

## Sustainability Fun Facts

**94%**

of growers farming on sloped ground maintain permanent drainage systems across their vineyard to manage runoff.

**95%**

of growers do environmental due diligence while the vineyard is being established.

**96%**

of growers are knowledgeable about the sensitive species that might live in their vineyard and around the region.

**97%**

of growers estimate the available water in the soil and monitor the vines before irrigating.





# Sonoma County Winegrowers Approves use of Sustainable Winegrowing Label on over 172,000 cases of Sonoma County wine - and Brings Sustainability to Life

Last year, we were pleased to announce that after years of partnering with growers, wineries, researchers, designers and regulatory officials, we launched the Sonoma County Sustainable Winegrowing label. At that time, we had approved labels for around 18,000 cases of wine. During the past year though, consumer and winery interest in displaying this mark has grown exponentially and we have now approved use of the label on over 172,000 cases (12-bottle boxes) from Sonoma County, and more wineries are joining each month!

This mark works much like a seal of approval. It ensures that those bottles which proudly display the Sustainable winegrowing logo have been vetted and include at least 85% certified sustainable grapes from Sonoma County. Local certified wine growers and vintners take pride in the sustainable practices they use to farm grapes and make wine. There is a strong commitment to a triple-bottom-line approach to farming and business. This includes being socially responsible in how growers work with

their neighbors, employees and community; being environmentally conscientious with farming and winery practices and remaining diligent and viable as an economically mindful business.

For years, growers around the county have proudly displayed their “Sonoma County Sustainable” signs beside certified vineyards. The sustainability label is similar to this sign, it signals to the wine lover that the wine they are going to enjoy has been made from sustainably farmed grapes.

Keep an eye out for this symbol when you are shopping for wine locally or around the country. You can find a list of wineries currently approved to use the label in 2019 on page 23 of this report. It’s a great way to support local sustainable agriculture.

For more information on the sustainable winegrowing label, visit [sonomawinegrape.org/](http://sonomawinegrape.org/)

## Augmented Reality Provides Breakthrough Experience for Sustainable Wines

We are excited to announce that starting in 2019, some of our winery partners will have wine labels enhanced with an augmented reality experience! This means that you’ll be able to hold your phone in front of one of these wine labels and see an educational animation about sustainability in winegrowing.

This project was part of our initiative to connect the story of Sonoma County winegrowing to the millennial generation and make use of technology to provide break-through marketing.

The Augmented Reality experience will be available on select wines from Ferrari-Carano, Dutton Estate, Dutton-Goldfield, Cline, Francis Ford Coppola and Lynmar as they are released in 2019! To try it yourself, keep an eye out for the Sonoma County Sustainable Wine app coming soon on Google Play and the Apple App Store.

LYNMAR ESTATE

ADAM’S VINEYARD

2017 PINOT NOIR

RUSSIAN RIVER VALLEY • SONOMA COUNTY

Named after their son Adam, Lynn and Anisya carefully chose our third estate site, which was planted in 2013. The east-north orientation of the vineyard, combined with classic Goldridge sandy loam soils, particularly suit the clones of Pinot Noir selected for this site. The result is a dynamic blend that showcases the uniqueness of this estate vineyard.

WWW.LYNMARESTATE.COM

ESTATE GROWN, PRODUCED AND BOTTLED BY LYNMAR ESTATE WINERY, SEBASTOPOL, CA.

GOVERNMENT WARNING: (1) ACCORDING TO THE SURGEON GENERAL, WOMEN SHOULD NOT DRINK ALCOHOLIC BEVERAGES DURING PREGNANCY BECAUSE OF THE RISK OF BIRTH DEFECTS. (2) CONSUMPTION OF ALCOHOLIC BEVERAGES IMPAIRS YOUR ABILITY TO DRIVE A CAR OR OPERATE MACHINERY, AND MAY CAUSE HEALTH PROBLEMS.

ALC. 14.3% BY VOL.

750 ML

CONTAINS SULFITES



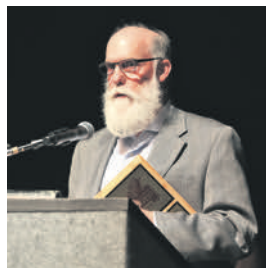
the sustainable winegrowing label can be applied either to the front or back label of the wine bottle

Augmented Reality experience activates with app and participating wines.

# 2018 Sonoma County Harvest Fair Sustainability Awards

Sonoma County Winegrowers are honored to bestow two Harvest Fair awards annually for sustainability. Throughout the year, we consider the many sustainable growers, wineries and community partners who demonstrate a strong commitment and example of sustainability in their business practices, environmental stewardship and social responsibility. The winners of these awards are honored at the Sonoma County Harvest Fair awards dinner at Luther Burbank Center.

## Duff Bevill, Sustainable Farmer



*Duff Bevill receives his sustainability award at awards night, September 30th, 2018*

Duff Bevill has been farming wine grapes in Sonoma County for over 35 years. He arrived in Dry Creek Valley in 1973 at the age of 22 for a summer job working with Joe Vogensen at his local vineyard management company. In that position, Duff became acquainted with many older farmers in Dry Creek Valley, who taught him old timers' wisdom and self-reliance. "I was in my early twenties, and I would sit in Jim Guadagni's cellar and drink his homemade wine out of shot glasses and jelly jars," he said. "It gave me a sense of history and an appreciation for what it means to be a grape grower in this valley."

A strong proponent and early adopter of sustainable farming, Bevill was involved in programming with the California Association of Winegrape Growers that would become the California Sustainable Winegrowing Alliance in 2003.

In 2014, Bevill Vineyard Management became the first 100% sustainable vineyard management company in California. Around that same time, he posed a question (or a challenge) to the new President of Sonoma County Winegrowers, Karissa Kruse: How can we get the Governor of California to recognize the efforts of Sonoma County growers' sustainable practices? This question led to many discussions that ultimately culminated in the commitment to certify 100% of Sonoma County vineyards sustainable as well as winning the prestigious GEELA award, the highest environmental honor in California.

"Sonoma County Winegrowers, and along with the Sonoma County Harvest Fair are proud to honor Duff Bevill with this award," said Kruse, "Duff has not only been a catalyst in advancing sustainable winegrowing in Sonoma County, but a tremendous supporter of our organization, community and continuing efforts to promote and protect the resources of Sonoma County grape growers for generations to come."

Duff Bevill and his wife Nancy live in the heart of Dry Creek Valley. They own and lease a total of 80 acres of vineyards in Dry Creek and Russian River Valley. In response to winning the award, Bevill remarked "It's a great honor to be recognized for a philosophy that the entire community of winegrowers have embraced. Our family is proud to be part of the Sonoma County winegrowing community, and we are hopeful that through sustainability, agriculture in this area will continue to thrive for generations to come."

## Rodney Strong Vineyards, Sustainable Producer



*Proprietor Tom Klein with Director of Winemaking, Justin Seidenfeld*

Rodney Strong Vineyards is dedicated to crafting world-class wines that capture the essence of Sonoma County. The winery was founded in 1959 by Rodney Strong, one of the pioneers of the modern Sonoma County wine industry and an acknowledged visionary who understood the potential that Sonoma County's soil and climate held for producing world-class wines. In 1989, the winery was purchased by the Klein family, a fourth-generation California farming family.

Today, the company continues its history of innovation and quality as one of California's most respected wineries.

The team at Rodney Strong farms 14 estate vineyards that have been certified sustainable by California Sustainable Winegrowing Alliance and Fish Friendly Farming. They have gone acre by acre through their estate properties to ensure they are taking every step they can to safeguard this region's ecosystem. The winery's solar energy system is one of the largest of any winery in the world, and they have continued their tradition of being pioneers in innovation by becoming the first carbon neutral winery in Sonoma County. "We have long believed that vines in balance with nature produce better fruit, and hence better wine," says Ryan Decker, Director of Estate Vineyards and lead on sustainability at Rodney Strong, "There are also numerous

cost savings from water to electricity usage. Sustainability is a win-win in every way." They were an early partner of Sonoma County Winegrowers in co-hosting sustainability workshops and helping to provide fellow winegrowers with valuable information on water conservation soil management and the benefits of sustainability certification. They continue to actively encourage and consult with growers to obtain certification. Additionally, Director of Winegrowing, Doug McIlroy is a long-standing member of the SCW Board of Directors. "We are so thankful for the partnership of Rodney Strong Vineyards," said Sonoma County Winegrower's President Karissa Kruse, "Congratulations to Tom Klein and the entire team on their well-deserved recognition as this year's Sustainable Producer award."



# Sonoma County Winegrowers' Center for Ag Sustainability Commences Effort to Preserve Local Agriculture's Future



2018 marked year one for Sonoma County Winegrower's Center for Ag Sustainability. This think tank was established to identify and focus on the most challenging problems facing the local wine community to ensure its continued success and the preservation of Sonoma County's agricultural heritage. While the very first meeting of the group was cancelled in 2017 due to the wildfire, the group met twice in 2018 to identify key issues and emerging threats while focusing on identifying and eventually developing innovative strategies to ensure that the Sonoma County Winegrowers' 100-year Business Plan can be realized.

The 100-year Business Plan, adopted in 2015, is believed to be the first of its kind in the agricultural industry. It was written as a living document utilizing one- and five-year benchmarks that identify transformational opportunities for collaboration and

partnerships with a variety of groups including agricultural, business, community, education and government. The Center for Sustainability uses the 100-year Business Plan as its "road map" to ensure it is solving the most pressing problems now and in the future to address four key priorities:

1. Adapting farm practices;
2. Sustaining and protecting the Ag sector;
3. Leveraging leadership in sustainability and a grassroots approach to climate change; and,
4. Understanding the changing industry economics.

"The idea behind the Center for Ag Sustainability is to bring experts from around the world to meet our growers and learn about their challenges so they can think about the future to develop the most innovative strategies now to preserve

agriculture and realize the vision of our 100 year plan," said Karissa Kruse, president of the Sonoma County Winegrowers.

Patterned after the Aspen Institute, the membership of the Center for Ag Sustainability is comprised of a diverse group of national issue experts representing finance, conservation, communication and agriculture. Each session is led by Dr. George Day, a professor with the Wharton School of Business. At the end of the two years, a white paper on the process and results will be produced and distributed globally by the Wharton School of Business.

The end goal is to develop potential solutions and roadmaps, reflecting the outside expertise and thinking of our expert members that will continue to protect agriculture in Sonoma County while making sustainable winegrowing a reality.

# Thank You to Our Sponsors

## Growers Circle Sponsors



## Platinum Sponsors



## Gold Sponsors

Advanced Viticulture Inc.  
Agrothermal Systems  
Bevill Vineyard Management  
Ciatti Company  
Cold Creek Compost  
Duarte Nursery  
Garton Tractor  
Grab N' Grow  
Munselle Civil Engineering  
NovaVine  
Ray Carlson & Associates, Inc.  
Redwood Empire Vineyard Management

The Saqui Law Group  
TerraVesco  
Turrentine Brokerage  
Yamaha Motor Corporation  
The Zenith Agribusiness Solutions

## Silver Sponsors

Allied Grape Growers  
Atlas Vineyard Management  
Atterbury & Associates, Inc.  
AXA Equitable AgriFinance  
Bayer Crop Science  
California Grower Foundation

Dutton Estate Winery  
EVIT  
George Peterson Insurance Agency  
Grey Creek Viticulture Services  
Harmony Farm Supply & Nursery  
Herrick Grapevines  
Knights Grapevine Nursery  
Moss Adams LLP  
Pacific Biochar  
Renner Petroleum  
Sunridge Nurseries  
Wonderful Nurseries



# Sustainability Roll Call

Sonoma County Winegrowers would like to recognize our grape growers and vintners who have assessed their vineyards or received sustainability certification from California Sustainable Winegrowing Alliance (CSWA), Fish Friendly Farming, Lodi Rules, or Sustainability In Practice (SIP) since making our sustainability commitment in 2014. Those in bold are certified.

**Note:** Vineyards below are listed by their vineyard name and/or the business entity name registered with our third party sustainability program partners. When searching for a specific vineyard, look for both the vineyard name and the business entity name. This honor roll list was compiled from information as of December 15, 2018. Any assessments or certifications after December 15 are not accounted for on this list.

## **CERTIFIED VINEYARDS**

**12 Moons**

**32 Winds Vineyard**

**4 C's Vineyard**

**7th St. Diserens Vineyards**

**A. Rafanelli Winery & Vineyards**

**Acreage Capital**

**aCURE eSTATE vineyards**

**Advanced Viticulture**

**AGG: Two Brothers**

**Agri-Tect**

**Alberigi Vineyards**

**Alegre Vineyards**

**Alegria Vineyards**

**Alexander Valley Vineyards**

**Aliabadi**

**Alpine Vineyard**

**Al's Vineyard**

**Alta Vineyard Management**

**Alta Vista Vineyards**

**Amapola Creek Vineyards**

**Amaro (Dirt Farmer)**

**AMR Vineyard Management**

**Anacleto Vineyard**

**Anderson Vineyards**

**Anderson-Ross**

**Andrew's Vineyard**

**Aquarius Ranch**

**Arbios Vineyard**

**Armagh Vineyard**

**Armor Plate & Chauvet**

**Arroyo Lindo Vineyard**

**Ascentia Vineyard**

**Asern Family Vineyard**

**Atlas Vineyard Management**

**Atwood Ranch**

**Aubert Vineyards**

**Autana**

**Azzaro**

**B A Thieriot Vineyards**

**B Wise Vineyards**

**Bacchi**

**Bacchus Vineyard**

**Bald Mountain Ranch**

**Baldocchi Vineyard**

**Balletto: Woolsey Road**

**Balletto: BCD**

**Balletto: Bravo Torro**

**Balletto: Burnside Rd.**

**Balletto: Cider Ridge**

**Balletto: Daywalt Rd.**

**Balletto: Guerneville Rd.**

**Balletto: Hall Rd.**

**Balletto: Jacqueline's Vineyard**

**Balletto: Mill Station Rd.**

**Balletto: Occidental Rd**

**Balletto: Olivet Rd.**

**Balletto: Pelletti**

**Balletto: Pierre's Vineyard**

**Balletto: Piner Rd.**

**Balletto: Sexton Flat**

**Balletto: Sexton Hill**

**Balletto: Spiderweb Ranch**

**Balletto: Stony Point Vineyard**

**Balletto: Watertrough**

**Balthazard**

**Banatao**

**Bannerman**

**Barbour Vineyards**

**Barn House**

**Barrelli Creek Ranch**

**Barricia Vineyard**

**Barrow**

**Bartolomei Vineyard**

**Bastoni Vineyards**

**Bateman Vineyard**

**Battaglini Estate: Twin Pines Ranch**

**Battle Family Vineyards**

**Batto Fruit Company**

**Bauer Vineyard**

**Bayer**

**Bazzano**

**BDV**

**Beckman Vineyard**

**Bedarra Vineyards**

**Beeson**

**Behler Vineyard**

**Belden Barns**

**Bella Terra Ranch**

**Bellavista Ranch**

**Bella Sonoma Vineyard**

**Bella Vineyards: Lily Hill Estate**

**Bellisimo Ranch**

**Beltane Ranch**

**Bembey Vineyards**

**Benguerele**

**Bennett Bench Vineyards**

**Bennett Ridge Vineyards**

**Bennett Valley Cellars**

**Benovia Cohn Estate Vineyard**

**Benovia Martaella Estate Vineyard**

**Benovia Tilton Hill Estate Vineyard**

**Benziger Family Winery: Estate**

**Benziger Family Winery: Quarryhill**

**Benziger Family Winery: Stone**

**Farm**

**Benziger Family Winery:**

**Sunnyslope**

**Berlin**

**Betty Ann Vineyard**

**Bevill Vineyard Management**

**Bevill Family: Black Ranch**

**Bevill Family: Borri North Ranch**

**Bevill Family: Borri South Ranch**

**Bevill Family: Griffen Ranch**

**Bevill Family: Hall Road Ranch**

**Bevill Family: Keegan Ranch**

**Bevill Family: MacDonald Ranch**

**Bevill Family: Piccetti**

**Bevill Family: Schneider Ranch**

**Bevill Family: Viognier Ranch**

**Bevill Vineyard Management: Abbe**

**Bevill Vineyard Management:**

**Akerlind WDC**

**Bevill Vineyard Management:**

**Alderbrook/Orsi**

**Bevill Vineyard Management: Baer**

**Bevill Vineyard Management: Black Horse**

**Bevill Vineyard Management:**

**Comstock Vineyards**

**Bevill Vineyard Management:**

**Draxton**

**Bevill Vineyard Management: Dry**

**Creek Vineyard Block 2**

**Bevill Vineyard Management: Dry**

**Creek Vineyard 8**

**Bevill Vineyard Management: Dry**

**Creek Vineyard 9**

**Bevill Vineyard Management:**

**ETSEC**

**Bevill Vineyard Management:**

**Garrison Ranch**

**Bevill Vineyard Management:**

**Hanna Alexander Valley**

**Bevill Vineyard Management:**

**Hanna Occidental**

**Bevill Vineyard Management:**

**Hanna Slusser**

**Bevill Vineyard Management: Hart**

**/Arbor Bench**

**Bevill Vineyard Management:**

**Keresey**

**Bevill Vineyard Management: La**

**Petit Etoile**

**Bevill Vineyard Management: M-G**

**Vineyards**

**Bevill Vineyard Management:**

**Muhleman**

**Bevill Vineyard Management: Puma**

**Springs**

**Bevill Vineyard Management:**

**Salem**

**Bevill Vineyard Management:**

# Sustainability Roll Call

Somers Grant	Bricoleur	Coffey Lane Vineyard	Diamond Pile Ranch
Bevill Vineyard Management:	Brooks & Vann Vineyard	Coin Flip Ranch	Dirt Farmer & Co
Somers HSK	Brown	Cole Creek Vineyard	DNA Vineyards
Bevill Vineyard Management:	Bruce	Colibri Vineyard	Dos Acres Vineyard
Stiling	Buckeye Vineyards	Comstock Wines	Dove Thomas Vineyards
Bevill Vineyard Management: Tusi	Buena Tierra Vineyard	Confidant Vineyards	Dow Vineyard
Bevill Vineyard Management:	Burning Bird	Constellation Brands	Draxton
Vogensen/Piccetti	Burwell	Cook Vineyard Management	Dry Creek Vineyard
Bevill Vineyard Management: West	Bush Crispo Vineyard	Corazon del Rio Vineyard	Dry Stack Vineyard
Wines; Akerlind DC	C&A Vineyards	Cornell Vineyards	Duckhorn Vineyards & Winery
Bevill Vineyard Management:	Cadd Ranch	Cornerstone Certified Vineyard	DuMOL Vineyards & Winery
Wolcott	Calegari	Costello	Dunbar Vineyards
Bevill Vineyard Management:	Calesa Vineyard	Covey Oak	Duste
Woods Alexis	Calhoun Vineyard	Crane Canyon	Dutton Ranch
Bevill Vineyard Management:	Calluna Vineyards	Crane Family Vineyards	Dutton Ranch - Alper Vineyard
Woods Kay	Calplans Wood	Creek Front Vineyards	Dutton Ranch - Barcaglia Lane
Bevill Vineyard Management:	Campbell-McKinney Vineyards	Creek's End	Dutton Ranch - Barron Vineyard
Woods North	Cameron Vineyards	Crocker Road Ranch	Dutton Ranch - Big John's
Bevill Vineyard Management:	Camporelli	Crockett	Dutton Ranch - Braughton
Yeomans	Carlisle Vineyard	Croft Vineyard	Dutton Ranch - Bush
Bevis	Carriger	Cuneo-Green Acres	Dutton Ranch - Campbell Vineyard
Bialla Vineyards	Cassatta Vineyards	Cuneo-Wilson Ranch	Dutton Ranch - Cleary
Bianchi Vineyard	Cast Wines	Cypress Ridge	Dutton Ranch - Cohen Vineyard
Bierbaum	Catapult Ranch	D & L Carinalli Vineyards	Dutton Ranch - Coon Vineyard
Birdland Vineyards	Catherine Bonneau Vineyard	D & S Wilson	Dutton Ranch - Dos Reis
Bisordi Ranch & Vineyard	Caton	D & J Vineyard	Dutton Ranch - Dutton Hill
Bizmark	Centurion Vineyards	Dairyman Vineyard	Dutton Ranch - Dutton Palms
Black Hole Vineyard	Champ Cal (Pompadour)	Dalton Vineyard	Dutton Ranch - G. Jewell Vineyard
Blake Mauritsen Vineyards	Chandler - Braccialini	Darden Vineyard	Dutton Ranch - Gail Ann's Vineyard
Blue Moon Vineyard	Chandler Ranch	Davis Family Vineyard	Dutton Ranch - Gamlen
Boarsview Vineyards	Charlie Smith	DaVero Farms & Winery	Dutton Ranch - George Vineyard
Bocage	Chateau Diana	Dawsone Vineyard	Dutton Ranch - Gerboth Vineyard
Bodega Headlands	Chelli Vineyard	Daylight Vineyard Management	Dutton Ranch - Germone Road
Bodega Ridge	Chemise Vineyards	Dayton Vineyards	Dutton Ranch - Goff Vineyard
Bohlen/Parks	Chenoweth Vineyards	De Simone Vineyard	Dutton Ranch - Gravenstein
Boisset Family Estates	Cherry Block	De Benedetti	Highway
Boisset Family Estates: Ferguson	Chiotti Ranch	Degrange	Dutton Ranch - Green Valley
Vineyards	CHR - Bertagna	Del Rio Ranch	Vineyard
Borcher Vineyard	Christopher Creek Winery	Delaney/Sobieski	Dutton Ranch - Gregori Vineyard
Borg Vineyard	Cisne	Dellar	Dutton Ranch - Hallberg Vineyard
Bottocelli Rockpile Vineyards	Clark Vineyard Management	DeMeo Vineyards	Dutton Ranch - Hansen Hill
Bowland Vineyard Management	Clayton	Demostene Ranch	Dutton Ranch - House Block
BR Cohn	Clear View Vineyards	Dempel Farming Co.	Dutton Ranch - JAS
Bradley	Cleary Ranch & Michael Valentine	Dempster Vineyard	Dutton Ranch - Jentoft
Branham Rockpile Vineyard	Clendenen Vineyard Management	Deodora	Dutton Ranch - Jewell Vineyard
Bravo Toro - Gaps View	Clos du Bois Winery	Deridere Aper Vinea	Dutton Ranch - Joy Ridge
Bravo Vineyard	Cloud 9	Desforges	Dutton Ranch - Lorenzo Vineyard
Brereton	Cloverdale Ranch	Dexter Vineyard	Dutton Ranch - Manzana Vineyard



# Sustainability Roll Call

Dutton Ranch - Martens	Farver	G & C Lurton-Trinité Estate	Harrick
Dutton Ranch - Marty's #2	Ferrari-Carano Vineyards & Winery	G & G Vineyards	Healdsburg Retreat
Dutton Ranch - Mengle Vineyard	Fichtenberg Vineyards	Galante Russian River Vineyard	Heirs of My Dream Vineyard
Dutton Ranch - Mill Station	Field-Cotati	Gallaher	Heller Family Vineyards
Dutton Ranch - Miller	Fieldsa	Gantz Family Vineyards	Henderson
Dutton Ranch - Morelli Lane	Fisher Vineyards	Garvey Vineyard Management	Henstooth Ranch
Dutton Ranch - Perry Ranch	Five Sisters Ranch East & West	Gehricke	Hershberg
Dutton Ranch - Ross Ranch	Flatridge	Gehring	Hervey Vineyard
Dutton Ranch - Sebastopol	Flax Vineyard	Geib Ranch	Hi Vista Vineyard
Vineyards	Flint/ Brown Barn	Germone Hill Vineyard	Hickerson
Dutton Ranch - Shop	Flowers Vineyard	Geyserville Ranch	Highland
Dutton Ranch - Silva Brothers	Fog Crest Estate Winery	Giovanetti Vineyard	Highway Vineyard
Dutton Ranch - Snow	Foggy Bend	Gird Creek Vineyards	Hill Ranch
Dutton Ranch - Stuppin	Foley Family Wines: Asti 1	Giusso Vineyard	Hilltop Ranch
Dutton Ranch - Sullivan	Vineyard	Glen Oaks	Hocking Ranch
Dutton Ranch - Summerhome Park	Foley FamilyWines: Asti 2 Vineyard	GlenLyon Vineyards & Winery	Hoffman
Dutton Ranch - Sunnyview	Foley Family Wines: Cynthia's	Gloeckner Turner Vineyards	Hogan's Run Vineyard
Vineyard	Vineyard	Gloria Ferrer Winery	Hook and Ladder Winery
Dutton Ranch - Sylvia's	Foley Family Wines: Champlin	Goepfrich Winery & Vineyards	Hoot Owl Creek Vineyards
Dutton Ranch - Thomas Road	Creek Vineyard	Goldfields	Hopkins River Ranch
Dutton Ranch - Triple JS	Foley Family Wines: Sebastiani	Gould Family Vineyards	Hoppe Kelly Vineyard/ Samantha's
Dutton Ranch - Walker Hill	Town Blocks	Grable	Vineyard
Dutton Ranch - Widdoes	Foley Family Wines: Robert and	Grace Vineyard Management	Horn Vineyard
Dutton Ranch - Winkler	Patrick's Vineyard	Grace Vineyard Management: All	Hower/ It's a Jungle Out There
Dutton Ranch Corp	Foley Family Wines: Wobken	Clients	Hummingbird Hill
Eastside Knoll	Vineyards	Gramm Vineyards	Sonoma Stage Vineyard
EcoTerreno	Foley Family Wines: Foley Sonoma	Green Pastures Vineyard	Iantosca
Edward James Vineyard	Estate Vineyard	GregGarious	Idlespoke
Edwards - Warren's Hill/Goldridge	Foley Family Wines: Lancaster	Greywacke Vineyard	Igra
Edwards - Flax Lower	Estate Vineyard	Grieve	Indian Springs Ranch Vineyard
El Mar and Olivos Vineyards	Fort Ross Vineyard	Griffin's Lair Vineyard	Iron Horse Ranch and Vineyards
El Novillero Vineyard	Foss Vineyard	Grindstaff	Ivy Glen Vineyard
Ellis Alden Vineyards	Four Seasons Vineyard	Grist Vineyard	Ivywood
Elsbree Vineyard	Management	Guadagni Vineyards	J Fisher
Engel	FoxDen	Guarachi-Sun Chase	J Vineyards & Winery
Engrafti (Cullinan Vineyard)	Francis Ford Coppola Winery &	Gundlach Bundschu Rhinefarm	J. Pedroncelli Winery & Vineyards
Enrique Castillo Vineyard	Vineyards	Gunsalus Vineyard	J2 Estate Vineyards
Management	Francis Vineyard	Gurney	Jack London Vineyard
Everest	Franco Vineyard	Gustafson Estate Vineyard	Jackson Family Wines
Every Vineyard	Frank Johnson Vineyards	H. David Vineyards	Jackson Family Wines and Red
Ewald Vineyard	Fredson	Haddad	Star Vineyards
Fairview	Freemon	Hafner Vineyard	Jackson Ranch
Fall Creek Vineyard	Frei Ranch	Haire Vineyards	Jade Mountain
Fallen Leaf	Freidman	Hall Bob's Ranch	James Family Vineyard
Faloni Ranch	Fritz Winery and Vineyards	Halling Vineyard	Jam's Nest
Fanucchi Vineyards	Frogmore Farm	Hamel Family Ranch	JD Ranch
Farina Vineyard	Frostwatch Vineyard	Handal Vineyard	Jemrose Vineyards
Farrow Ranch	Frugoli	Hanzell Vineyards	Jepson

# Sustainability Roll Call

John Tracy Vineyard  
Jordan Vineyard  
Jordan Vineyard & Winery  
Joseph Family Vineyard  
Joseph Phelps Freestone Vineyards  
Joy Road Vineyard  
Joyce Vineyard  
Judge Family Vineyard  
Justi Creek Vineyards  
Katherine Lindsay Vineyard  
Katon  
Keating  
Keegan  
Keller Estate  
Kent Vineyard  
Kenwood Vineyards  
Ketcham Estate Winery  
Kholamian  
Kick Ranch - Estate  
Kilkullen Family Vineyard  
Kiser Vineyards  
KL Barr  
Knights Bridge Estate Vineyard  
Knox  
KOA  
Kobler  
Kohl Vineyard  
Korbel Champagne Cellars  
Kortz/Weeks  
Kozlowski Family Vineyard  
Kryzaowski Vineyard  
Kuimelis Vineyards  
Kunde Family Vineyards & Winery  
Kurtzman  
L Blocks  
La Cienega Vineyard  
La Porte Cochere Vineyard  
La Prenda Vineyard Management  
La Vigna  
Lafranchi  
Lago di Merlo Vineyards  
Lagomarsino  
Laguna North  
Laguna Oaks  
Laguna Ranch  
Lalivara Vineyard

Lambert Bridge  
Landmark Vineyards  
Landmark Vineyards at Hop Kiln Estates  
Landy Family Vineyards  
Las Brisas Vineyard  
Las Madres Vineyards  
Laurel Glen Vineyard  
Lavell Vineyards  
Lawer Vineyard  
Lazy M Ranch  
Lazy W Ranch  
Le Vois  
Leahy  
Leff/Maple  
Les Pierres  
Leveroni Vineyards  
Lichau Hill  
Lindley Vineyard  
Lion Oaks  
Liquid Sky  
Lisa's Vineyard  
Little Vineyard  
Lloyd Vineyard Management  
Lone Pine  
Lone Star  
Long North & South  
Lorenzo Vineyards  
Los Alamos  
Los Amigos  
Los Chamizal Vineyards  
Los Guillicos Vineyard  
Love Vineyard  
Lowe Vineyards  
Lower Hocking Ranch  
Lucky 21  
Lynmar Estate: Adams Vineyard  
Lynmar Estate: Quail Hill Vineyards  
Lynmar Estate: Susanna's Vineyard  
Lynzabeth Vineyard  
Lytton Estate East  
Lytton Rancheria Vineyards  
Lytton West Vineyard  
Maacama Ranch 1, 2 & 3  
MacLeod Family Vineyard  
MacMurray Ranch  
MacRostie Winery & Vineyards

Madden Vineyard Madden Ranch  
Madhaven  
Madrone Vineyard Management  
Magay  
Magnolia  
Marcucci Farms  
Marimar Torres Estate  
Marshall  
Marsha's Vineyard  
Martin Ray Estate Vineyard  
Martinelli Vineyards & Winery  
Marymor  
Massoni Ranches  
Mauritson Family Vineyards  
Mazzoni Vineyards  
McClain Vineyards  
McDougle Vineyards  
McWilliams  
Medieros  
Medinger Vineyard  
Medlock Ames Vineyards  
Mendelsohn  
Merlin  
Merriam Vineyards  
Merry Edwards: Coopersmith Vineyards  
Merry Edwards: Cresta d'Oro Vineyard  
Merry Edwards: Georganne  
Merry Edwards: Meredith Estate Vineyard  
Merry Edwards Winery: Maefield  
Merry Edwards: Rich Haven  
Merry Edwards: Sanchietti  
Mes Files  
Michael David Winery of Sonoma  
Michael Mara Vineyards  
Mil Vistas Vineyard  
Mill Creek Vineyards  
Millen Vineyard  
Mills Vineyard  
Mission Block  
Monson Vineyards  
Montafi  
Monte Rosso  
Montecillo Vineyards  
Moonridge Vineyard

Moresco  
Morningsong  
Morning Sun Vineyard  
Morris  
Mt Olivet  
Mudroglu  
Mullen  
Murray Vineyard  
Napoli Vineyards  
Nathanson Creek Vineyard  
Nelson  
Nervo  
Newman Vineyard  
Newsome Family Vineyards  
Nicholson  
Nick Leras Vineyard  
Nimble Vineyards  
Nineveh Vineyard  
Noble Family Vineyards  
Nobles Vineyard  
Noble Vineyard Management  
Nolan Vineyards  
Nonella Vineyard  
Nord Coast Vineyard Service  
Norris  
North Coast Vineyard Management  
North Pacific Vineyard Management  
North River Vineyards  
Nunemacher  
Nunez Vineyard Management  
Nuns Canyon Vineyard  
Oak Ridge Vineyards  
Oat Valley Vineyards  
Oddone Vineyard  
Oehlman Vineyard  
Old Camp Vineyards  
Olive Avenue  
Olivet Grange Vineyard  
Olson Vineyard  
Orsi Vineyards  
Osborn Ranch  
Owsley  
P. Boeck  
Pacquet Vineyard  
Pahlmeyer - Wayfarer  
Papera



# Sustainability Roll Call

Paradise Ridge Winery  
Park Avenue Turf Vineyard  
Parmelee-Hill Vineyards  
Parr Vineyards  
Parson's Homegrown  
Pasatiempo Vineyard  
Pate Vineyard  
Patient Terrier  
Patin Vineyard Management  
Patz & Hall Wine Co.  
Paul Hobbs Winery  
Pauls Vineyard  
Peaceland  
Peay Vineyards  
Peline Vineyards  
Pelkan Ranch and Vineyard Co.  
Pellegrini - Olivet Lane Vineyard  
Pellini  
Perry  
Peter Michael Winery: Knight's Valley Estate  
Peter Michael Winery: Seaview Vineyard  
Petersen Land Management  
Petersen Vineyards  
Peterson's Ranch  
Pfendler - Helgren Vineyard  
Pfendler - Home Vineyard  
Pfendler - Pullis Vineyard  
Pickberry  
Pina Vineyard Management  
Pinsof  
Placek  
PNA Vineyard  
Polesky Mountain Road Ranch  
Pomerantz  
Ponzo Vineyards  
Poplar  
Prati Ranch  
Pratt Family Vineyard  
Pratt Family Vineyards: Hall Road  
Pratt Family Vineyards: Irwin Lane  
Pratt Family Vineyards: Lakeview  
Pratt Family Vineyards: Sexton Road  
Pratt Family Vineyards: Vine Hill  
Preston Vineyard

Price Family Vineyards - Dupont  
Price Family Vineyards - Durell/ Ellie  
Price Family Vineyards - Gap's Crown  
Price Family Vineyards - One Sky  
Price Family Vineyards - Stoetz  
Price Family Vineyards - Vella  
Price Family Vineyards - Walala  
Price Family Vineyards - Wilson  
Prior Family  
Pritchett Peaks Vineyard  
Provisor  
Puccioni Ranch  
Puma Springs Vineyard  
Putnam Vineyards  
Quarry  
R Bar N  
R. Carraro Vineyards  
R.F.S. Vineyards  
Raggio Trust  
Ramal East  
Rams Gate Vineyard  
Rancho 10 Acres  
Rancho Coyote  
Rancho Cuvare  
Rancho Emiliano  
Rancho Gallinas  
Rancho La Familia  
Rancho Lazaro  
Rancho Los Cuates  
Rancho Los Hermanos  
Rancho Maria  
Rancho Salina  
Rasmussen  
Red Car Wine  
Red Fan  
Red Fox Ranch  
Red Star Vineyards  
Redwood Empire Vineyard Management  
Redwood Glen  
Redwood Hill Vineyard  
Redwood Ranch & Vineyards  
Reichel Vineyard  
Renteria Vineyard Management  
Calesa Vineyard

Ressler  
REVM 1 & 2  
Reynoso Vineyards  
Ricci Vineyards  
Richards Vineyards  
Ricioli Bros.  
Riddle Vineyards  
Ridgeline Vineyard  
Rink  
Rio Lago Ranch & Vineyard  
Rising Star  
River East  
River Ranch  
River Road Family Vineyards and Winery  
Riverfront Vineyard  
Riversmoke Vineyard  
Roan Vineyard  
Robert Mauritsen Vineyards  
Robert Young Vineyards  
Roberts Vineyard  
Roche Winery  
Rockpile Ridge Vineyards  
Rocky Hill Enterprise  
Rocky Ridge Vineyards  
Rodney Strong Vineyards  
Roger Wishard Vineyard  
Rombauer Vineyards: Davitto Vineyard  
Ron Rubin Winery  
Ross Station Vineyards  
Rossi Ranch  
Rotlisberger Ranch  
Roush  
Rudd Vineyards  
Rued Home Ranch  
Rued Vineyard  
Running Creek Vineyard  
Russian Hill - Talawind  
Russian Hill Wine Estates  
Ruxton  
Ryan Ranch  
S & K Ranch  
S & S Ranch  
Saggio Hills  
Sail & Anchor Vineyard  
Saitone Vineyard

Saleh  
San Lorenzo Vineyard  
Sanchietti Farming  
Sanchietti Nonella Chard  
Sanchietti Ranch  
Sanchietti: David August  
Sanchietti: Giuseppe  
Sanchietti: Green Valley  
Sanchietti: Pleasant Hill  
Sanchietti: Sundance  
Sanchietti: Two Brothers  
Sanchietti: Two Dryers  
Sangiacomo Vineyards  
Santo Giordano  
Sapphire Canyon  
Sarlo  
Sasson Vineyard  
Sceales/Bingham Vineyard  
Schrader  
Schug Carneros Estate Winery  
Scintilla Sonoma Vineyard  
Scott  
Sei Querce Vineyards  
Serres Ranch  
Sevillano  
Shamwari  
Shawn Vineyards  
Shea Collins Ranch  
Shiloh Glen Vineyard  
Shiloh Vineyard  
Shippey  
Shone Farm  
Siebert Vineyards  
Siegmond  
Silk Road  
Silver Cloud  
Silver Oak Cellars: AV Estate  
Silver Oak Cellars: Big River  
Silver Oak Cellars: Crazy Creek  
Silver Oak Cellars: Redtail  
Silver Oaks Cellars: Miraval 7800  
Silver Pine  
Silverado Farming Company  
Silverado Vineyard  
Simi Winery  
Simoneau  
Simons Valley House

# Sustainability Roll Call

Simon-Williams	Syar Family Vineyards	Tri-Valley Vineyard Management:	Warnecke Ranch & Vineyard
Simpatico Ranch	T & T Vineyards	S/J Vineyards	Wasson Ranch
Simpson Vineyard	Tanya's Vineyard	Trohan Vineyard	Wat Vineyard
Sink Vineyard	Taylor Vineyards	Trueheart - Smith	Weinberg
Skinner Vineyard	Taylor Lane Vineyard	Truett Hurst Winery Home Ranch	West Dry Creek Ranch
Sleeping Dog	Teldeschi Vineyards	Trujillo	Westerhold
Smith Vineyard	Tempesta	Tula Vista	Westphall Ridge Vineyard
Smoke	Teran	Turtle Vines	White Perry Vineyard
Smokey Ridge	Terra de Promissio	Twin Hill Vineyard	White Ranch
Snow	TGE - Baker Ridge	Twin Valley Ranch	Whitton Ranch
Sodini	TGE - Cresta Ridge	Two Rock Ranch	Wilcox
Soiland	TGE - Sons & Daughters	Twomey Cellars: Laststop	Wild Oak Vineyard
Somers Vineyard	TGE - Wickersham	Twomey Cellars: Merino	Wild Iris Vineyard
Sonoma Ag Art: Coffey Lane	The Haven Vineyard	Twomey Cellars: Twomey West	Wild Rose
Sonoma Ag Art: Jones Road	The Hess Collection - Mardikian Vineyard	Twomey Cellars: Westpin	Wildcat Mountain Vineyards
Sonoma Ag Art: Mark West	The Murray Farm	Uboldi Vineyards	Wildwood Vineyards
Sonoma Cutrer Vineyards & Winery	The Nine's Vineyard	UPTick Vineyards	William Gordon Winery: Pesonen Vineyards
Sonoma Highway	The Pivot Vineyard	Vadasz Vineyard	William Gordon Winery: Hill-McSweeney
Sonoma Mountain Vineyards	Theriot Vineyards	Valdez Vineyards	Williams Selyem Estate: Drake Vineyard
Spencer Vineyards	Thomas Mauritsen Vineyards	Valla Farm	Williams Selyem Estate: Lower Williams Selyem Estate:
Spring Hill Ranch & Vineyard	Thompson Vineyard	Valley of the Moon	MacGregor Ranch
Square Peg	Thornton Ranch	Van Loben Sels	Williams Selyem Estate: Upper Williams Vineyard
St. Anne's Crossing	Titus Vineyard	Van Ness	Williamson
Stamos Vineyard	Toboni Vineyard	VanAlyea	Wilson Artisan Vineyards
Stanley	Tognazzini Vineyard	Varenna	Wilson Ranch
Starlite Vineyards	Torrey Hill	Vena Vineyard	Wilson Road Ranch
Starr Creek Vineyard	Trattore Farms Vineyard	Vesom	Windsor Creek
Starscape	Tre Torrente Vineyard	Viansa	Windsor Oaks Vineyards & Winery
Stead	Treasury Wine Estates	View Wines	Wine Creek Ranch & Vineyards
Stefani	Treborce Vineyards	Vina Del Sol; Adobe	Winners Circle
Stetson - Greene Vineyards	Treehouse 1 & 2	Vina Del Sol; Arnold	Yellow Dog Vineyards
Stevens	Tres Palmas	Vina Del Sol; Ramal	Yoakim Ranch
Stone Ranch	Trieb	Vine Hill Vineyard	Yoder
Stracquadanio Vineyard	Trinchero Family Estates	Vinedresser Vineyard Management	Zichichi Family Vineyard & Wines
Strickland	Trinity Ridge	Vinegar Hill Vineyard	Zimmerman Vineyard
Stuhlmuller	Triple Ten	Vinepro Vineyard Management	
Summa Vineyards	Tri-Valley Vineyard Management	Vineyard Eleven	
Sundawg Ridge Vineyard	Tri-Valley Vineyard Management:	Vineyard of Pasterick	
Sutter	Jimtown Ranch Vineyards	Vino Farms	
Swallowfork Vineyards	Tri-Valley Vineyard Management:	Vintners Inn	
Sweetwater- Beliz Gambogi Vineyard	Lytton Homeland Vineyards	Vivio Vineyard	
Sweetwater- Henze Vineyard	Tri-Valley Vineyard Management:	Vyborny Vineyard Management	
Sweetwater- Hook & Ladder Vineyard	Oliver Vineyards	Vyborny Vineyards	
Sweetwater- Los Amigos Vineyard	Tri-Valley Vineyard Management:	W Ranch	
Sweetwater- Seversons Vineyard	Reedy - Del Rio Vineyards	Walala Vineyards	
Sweetwater- Simeones Vineyard	Tri-Valley Vineyard Management:	Walker Station	
	Reedy - River Dale Vineyards	Wallace Ranch	
		Walsh Vineyards Management	

## ASSESSED VINEYARDS

2 Limones  
A Creek  
Abbondanza Vintners Square  
Alexander Vineyard  
Anne's Vineyard - Blue Far  
Aslin



# Sustainability Roll Call

Baker Vineyard  
Bartholomew Park  
Beard Vineyard  
Bella Sonoma  
Bellacaria  
Bermudes Vineyard  
Birch Estate  
Blaq Vineyard  
Brushera  
Camelia Vineyard  
Cartan Vineyards  
Chalk Hill Estate Vineyards & Winery  
Char Vale  
Choate Vineyard  
Coco Bean - Brown  
Collier Falls  
Coturri Estate  
Coyote Hill Vineyards  
Coyote Ridge  
Cummings  
Cut Root Vineyard  
Davis Vineyard  
Denner Ranch  
Donum Estate - Ferguson  
Donum Estate - Lawler Vineyard  
Donum Estate - Winside  
Double T Ranch  
Dr. Smith Vineyard  
Drummond Pike  
East Rancho  
Enzenauer Vineyard Management  
Ernest  
Foote Vineyard  
Fox Ranch  
Frog Creek  
Funsten  
Gaddis Vineyard  
Gerhardt Vineyard  
Gianquinto Vineyard  
Graham Family Vineyard  
Guidici  
Hallberg Ranch  
Hastings Vineyard  
Herrick Vineyards  
Hirsch Vineyards  
J Rickards Vineyards  
Jenkins Ranch

John Somers  
Kamen Vineyards  
Klopp Ranch  
Laguna  
Lark Vineyard  
Larson Family  
Little Boot  
Marcucci  
Mathy Vineyard  
McAdams  
McCloskey  
McCoy Vineyards  
Meyer Vineyard  
Moon Mountain  
Moville Vineyards  
Murphy Vineyards  
Nelligan  
Norris Vineyard  
O'Callaghan Vineyard  
Opatz  
Paradise Vineyards  
Passalacqua Vineyard  
Pinot Hill  
Portis  
Regusci Vineyard Management  
Rochioli: Eastside vineyards  
Rochioli: Westside Vineyards  
Rockin H Ranch  
Rockpile Road Vineyards  
Scharer  
Sevas Vineyard  
Severson  
Silver Lining  
Simon Hill House  
Skikos Vineyard  
Skipstone Ranch  
Sonoma Creek Vineyard  
Soracco Family Vineyards  
Spadoni  
Spring Hills  
Stone Edge Vineyards  
Tambellini  
Taylor  
Timber Crest Farms & Peters Vineyards  
Trentadue  
Trenton Vineyard  
Two Moon Vineyard

V. Buchignani Vineyard  
Viluko Vineyards  
Wallstrum Family Vineyards  
Weinstock Vineyard  
Welch  
West Rancho  
Wild Hog Vineyard  
Yamoah Vineyard  
Zuckerman Vineyard

## CERTIFIED SUSTAINABLE WINERIES

Alexander Valley Vineyards  
Asti Winery  
Blackstone Winery  
Brown Forman Wines  
C Donatiello Winery  
Carneros Hill Winery  
Carneros Wine Company  
Cartograph Winery  
Cinque Insieme Winery  
Cline Family Cellars  
Clos du Bois Winery  
Copain Winery  
Cross Barn Winery  
Dry Creek Vineyard Winery  
Dutton Estate Winery  
Francis Ford Coppola Winery  
GlenLyon Winery  
Gloria Ferrer Winery  
Hafner Vineyard  
Hartford Winery  
Heck Cellars Winery  
Heirs of My Dream Winery  
J Vineyards & Winery  
J. Pedroncelli Winery  
Jacuzzi Family Vineyards  
Keller Estates Winery  
Kittyhawk Winery  
Korbel Winery  
Kunde Family Winery  
La Crema Winery  
Lancaster Estate Winery  
Laurel Glen Winery  
MacRostie Winery & Vineyards  
Madrone Estate Winery  
Marimar Estate Winery  
Martin Ray Winery

Martinelli Winery  
Mauritson Winery  
Merry Edwards Winery  
Notre Vue Winery  
Paul Hobbs Winery  
Pasterick Winery  
Pellegrini Wine Co.  
Punchdown Cellars  
Purple Wine & Spirits - Graton Winery  
Ram's Gate Winery  
Ravenswood Winery  
Rodney Strong Vineyards Winery  
Ron Rubin Winery  
Shone Farm Winery  
Siduri Winery  
Simi Winery  
Sonoma-Cutrer Winery  
Split Creek Winery  
St. Francis Winery & Vineyards  
Stonestreet Winery  
Trattore Farms  
Two Amigos Winery  
Twomey Cellars - Westside  
Vérité Winery  
Vinwood Winery  
Virginia Dare Winery  
William Gordon Winery

## WINERIES WITH LABELS BEARING SONOMA COUNTY SUSTAINABLE WINEGROWING LOGO

Alexander Valley Vineyards  
Balletto Vineyards & Winery  
Cline Family Cellars  
Dutton Estate Winery  
Dutton-Goldfield Winery  
Ferrari-Carano Vineyards & Winery  
Francis Ford Coppola Winery  
Gary Farrell Vineyards & Winery  
Jacuzzi Family Vineyards  
Lynmar Estate  
Sangiacomo Family Vineyards  
Shone Farm Winery



# Our Creed

We are farmers always

We are grape growers today

We believe in preserving agriculture  
for future generations

We see sustainability as our compass  
for better farming and business

We understand that history offers  
a guide to making decisions in the future

We believe in continuous learning,  
improvement and collaboration

We are positive contributors to  
our community and industry

We are caretakers of the land we inherited  
on behalf of those who will inherit it from us

We are Sonoma County

[SonomaWineGrape.org](http://SonomaWineGrape.org)

**SONOMA  
COUNTY  
WINEGROWERS**